



KAILANI
2024 ILIAD 53S



[YACHTSALESCO.COM](https://www.yachtsalesco.com)



KAILANI

EXQUISITE CRAFTSMANSHIP & FUEL EFFICIENCY

Kailani presents an extremely rare opportunity to own a superb near-new 2024 ILIAD 53S.

This highly specified Owners' version features class-leading fuel efficiency, outstanding living space and exquisite craftsmanship, and is the ideal yacht for families or shared ownership between two parties. Turnkey and ready for her next adventures, this ILIAD 53S represents outstanding value in the luxury catamaran market.



Renowned for its remarkable range and commanding performance, the ILIAD 53S sets a new standard in power catamarans.

Due to unforeseen circumstances, the owners are reluctantly parting with *Kailani*, presenting a rare chance to acquire this 2024 ILIAD 53S without the wait or new-build price tag. This luxuriously appointed catamaran blends performance, comfort, and sophistication, making her ideal for long-range cruising.

The expansive main deck is designed for seamless indoor-outdoor living, with an open-plan saloon and aft galley flowing into the cockpit via full-beam sliding doors. The gourmet galley is fully equipped, while the outdoor wet bar with BBQ grill, icemaker, and extra refrigeration creates the perfect setting for entertaining.

“Prestige and unparalleled craftsmanship”

The master suite in the starboard hull comprises a queen-sized walk-around bed, ample storage, vanity, and a luxurious ensuite with rain shower. The port hull features a twin aft cabin and a forward guest suite with a double and single bed, each with a private ensuite—ideal for families or shared ownership.

The forward saloon exudes modern elegance, courtesy of plush seating, a floating coffee table, ottomans, a 50-inch pop-up TV, and a starboard helm station with Garmin instrumentation and twin Besenzone helm chairs.

Kailani is highly optioned and under warranty, featuring a 3.2kW solar power system with lithium batteries, upgraded shaft drive engines and bow thruster, and a hydraulic platform with a 3.8-metre Highfield tender. Custom covers, foredeck awnings, additional refrigeration, and intelligent storage solutions further enhance her functionality.

With impressive range and coastal cruising capabilities, *Kailani* is turnkey and ready for adventure. This as-new ILIAD 53S represents outstanding value in the luxury catamaran market.

Contact us today to arrange a viewing.

Enjoy generous living space
and the finest quality of
finishes throughout.



YEAR
2024

LOA
16.37m / 53.71ft

BEAM
7.63m / 25.03ft

DRAFT
1.22m / 4.00ft

DISPLACEMENT
26T

CABINS
3

SLEEPS
7

BATHROOMS
3

RANGE
2,500nm

SPECIFICATIONS

Vessel Name	'Kailani'
Make	ILIAD Catamarans
Model	ILIAD 53S
Year	2024
Length	16.37m / 53.71ft
Beam	7.63m / 25.03ft
Draft	1.22m / 4.00ft
Displacement	26T
Engines	2 x Cummins 550 Hp
Galley Configuration	Galley Up
Fuel Capacity	3,500L
Water Capacity	800L
Construction	GRP
Deck Material	GRP
Keel Type	Mini keels
Designer	Riccardo Bulgarelli
Builder	ILIAD Catamarans
HIN	HK-1LD53S0C424
Place of Registration	Queensland, Australia
Registration No.	BTF74Q
Lying	Airlie Beach, QLD
No. Helms	1
Category	CE Cat A Ocean





ENGINES / STEERING

No engines	2
Engine make	Cummins
Engine model	QSB6.7 550
Horsepower	550 Hp
Engine years	2024
Engine numbers	22596129 22596198
Last service	May 2024
Propellors	5 blade fixed

Fuel consumption	70 lt/hr/engine at 17 knots
Fuel type	Diesel
Max speed	22 knots
Cruise speed	17/18 knots
Thrusters	Bow thruster
Drive type	Shaft
Steering system	Hydraulic
Rope cutters	Yes





ACCOMMODATION

Master Cabin	1 Queen
Guest Cabin 1	Twin singles
Guest cabin 2	1 double + 1 single
Bathrooms	3
No. Heads	3
Head Type	All electric freshwater flush
Head Height	Min 2.03m in lower deck

GALLEY

Bosch electric oven 60cm	Vitfrigo IM XT OCX2 Hydro ice maker in cockpit bar
4-burner induction stove	Stainless steel sink
Siemens microwave oven 60cm	Siemens 45cm dishwasher
3 x Vitfrigo DWR 180A fridge/freezer	

INTERIOR

Interior deck floor in Quickstep Spotted Gum	Caesarstone tops in galley and saloon coffee table
Timber veneer cabinetry in ‘Elm’	Timber (Elm) dining table
Ultraleather Promessa Tusk upholstery	Ultraleather decor panels in cabins
Electric blinds in saloon	Modular dinette stools in Ultraleather
Electric sunroof in saloon	Twin Besenzoni helm chairs

EXTERIOR

External hull painting system

- Antifouling (with Epoxy primer)
- White gelcoat

Deck

- Flexiteek flooring in cockpit, transom steps and aft platform

Deck gear

- Flush hatches on deck
- Opening window from saloon to foredeck
- Large underfloor storage lockers throughout
- Swim ladder
- Hydraulic aft platform (450kg SWL) capacity
- Fresh water deck wash

External doors

- Sliding door from cockpit to saloon (manually operated) - stainless steel frame
- Opening servery window from galley to cockpit

Open decks furniture

- Sunbrella upholstery on exterior lounges in Cast Ash
- Custom covers and foredeck awning
- Foredeck lounges with adjustable backrests
- Cockpit wetbar with Epicure Cookout 2-plate grill, fridge, icemaker
- Extendable timber cockpit table





POWER, STEERING, MANOUVERING & MOORING EQUIPMENT

2 x Cummins 550
HP engines

Bow thruster

5-blade fixed
propellers

Hydraulic steering

Engine room sound
insulation

Mooring set (6 x
fenders, 6 x mooring
lines)

100m - 10mm
anchor chain

1 x 40kg Lewmar stainless
anchor

Quick Regal 1500w windlass



PLUMBING / PIPING SYSTEMS

Fuel System

- 3,500 L diesel tank

Bilge system

- 8 x electrical bilges with float switches

Fresh water

- 800 L fresh water tank
- Fresh water pressurising pump
- Fresh water heater
- Fresh water inlet
- Deck shower on starboard aft platform
- Sea Recovery Aqua Whisper mini 1400-2-211lt/hr watermaker

Deck Wash System

- Pressurised fresh water outlet on cockpit

Sanitary Drains System

- Blackwater tank 250L
- Greywater tank 250L
- Electric toilets in bathrooms with fresh water flush

A/C System

- Climma 65,000 BTU chiller system
- Reverse-cycle air conditioning system



Kailani is a seamless fusion of contemporary elegance, offshore capability and spacious luxury.



ELECTRICAL SYSTEMS

AC distribution system

- Shore power 220v
- Main Switchboard AC 230V @ 50 Hz, 1 phase with extension panel
- Victron Quattro 24V/5000W/120A
- 1 x 230V socket per cabin, two 230V socket in saloon, dining area and galley, 2 x USB socket in each cabin and 2 x in saloon

DC distribution system

- Victron Multiplus 24/5000/120 inverter
- Main Switchboard 25.6V DC
- DC distribution system and wiring
- Lithium battery pack
- Onan 13.5kw generator
- 3.2kw solar power (8 x 400w panels)
- Alternator 12v 160amp each
- 600amp/24v Victron lithium batteries (3 x 200amp)
- 2 x 150amp/hr AGM + 1 x 150amp/hr for genset
- Victron Multiplus 24/5000/120 battery charger



NAVIGATION/LIGHTING SYSTEMS

Navigation

- Garmin Panoptix PS51-TH depth sounder with forward-facing sonar
- Full Garmin suite of electronics, including log, radar, autopilot, wind instruments, chart plotter, AIS auto ID system, GPS & VHS

Lighting System

- Interior lighting with LED lamps
- Lights in engine rooms
- Spotlights on skirt's steps, sidewalks, front terrace deck and cockpit ceiling
- Exterior lighting package
- Indirect ambient lighting of fixed furniture on flybridge and cockpit
- 6 x underwater lights LED





AUDIO VISUAL / IT / SAFETY & OTHER SYSTEMS

AV & IT systems

- KVH Tracvision TV6
- Satellite TV antenna
- Fusion MS RA770 stereo
- 50" pop-up saloon TV

- 2 waterproof speakers on front deck
- Starlink Wifi system
- 43" television" (master cabin)

Safety equipment

- Automatic fire extinguishers in engine rooms
- Dry powder handheld extinguishers
- Fire blanket
- EPIRB 406mhz

Other

- LG washer/dryer
- Highfield 3.8m tender
- Cockpit enclosures

Disclaimer:

The Yacht Sales Co. offers the details of this vessel in good faith but cannot guarantee or warrant the accuracy of this information nor warrant the condition of the vessel. A buyer should instruct his agents, or his surveyors, to investigate such details as the buyer desires validated. This vessel is offered subject to prior sale, price change, or withdrawal without notice.



















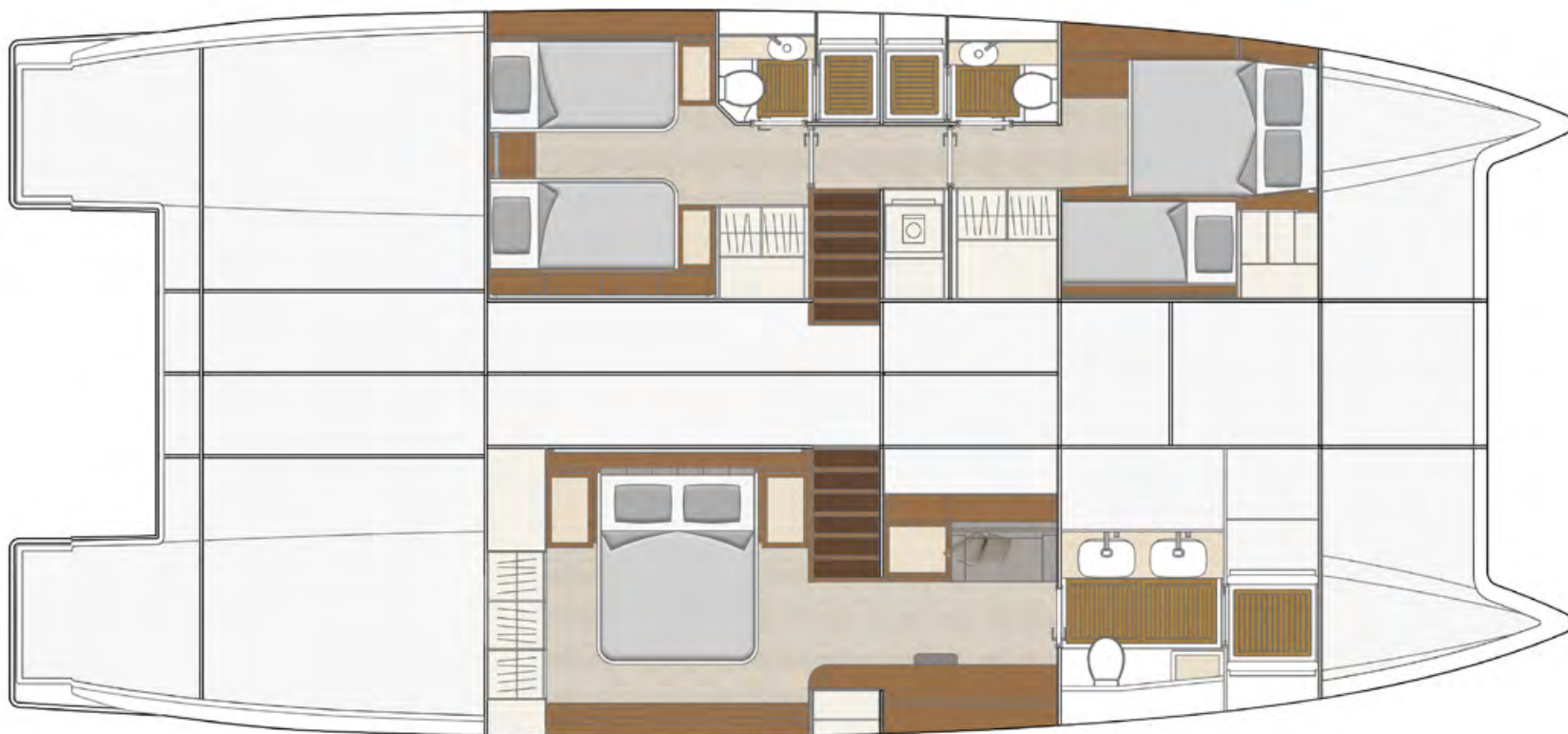














Marcus Overman

SENIOR SALES CONSULTANT

+61 (0) 499 989 559
marcus.overman@yachtsalesco.com

Born in the UK and relocating to Sydney at a young age, Marcus Overman brings decades of marine industry expertise and a wealth of international experience to The Yacht Sales Co.

His extensive resume includes working with Sunsail in the Whitsundays, instructing sailing in the Greek Islands and teaching Yachtmaster courses on Sydney Harbour. Marcus also managed Sunsail's Phuket base from 2003 to 2005 before overseeing a high-end charter company specialising in crewed powerboats in Phuket until 2007.

Joining Lee Marine in Phuket as a broker, Marcus excelled over 12 years facilitating the sale of over 150 boats and earning a reputation for delivering exceptional service in both new and pre-owned yacht sales. In 2020, he joined The Yacht Sales Co., where his expertise in premium motor yachts has established him as one of the industry's leading sales professionals..

Find out more about The Yacht Sales Co. and our international team at yachtsalesco.com.



yachtsalesco.com



info@yachtsalesco.com | + 61 (0) 499 989 559

YACHTSALESCO.COM